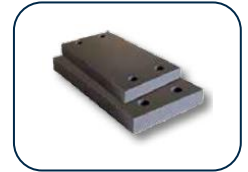


PLAKA – THERMO BREAK TYPE 100**Thermal break material**

REF 07.08.01 - Version V01 – 21/12/2020

**Description**

THERMO BREAK Type 100 is a high-performance thermal insulator used between both horizontal and vertical connections of internal and external elements to prevent thermal/cold bridging. This thermal break material has a high permissible loading pressure.

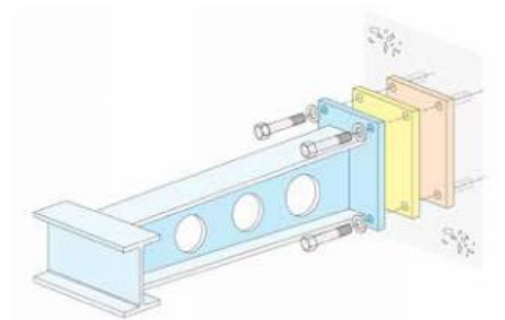
Application fields

The four primary connections where thermo break plates are used are as follows:

- Steel to steel
- Steel to concrete/masonry
- Steel to timber
- Concrete to concrete

Thermo break plates are used in new build and refurbishment projects in the following building elements:

- Balconies and balustrading
- Brise-soleil
- Entrance structures
- External staircases
- Façade systems
- Internal/External primary structure junctions
- Man-Safe systems
- Roof plant enclosures
- Sub-structure and basements



©Copyright protected

This sheet, written with great care, supersedes all previous versions. The technical information on the design, models, illustrations, design values and specifications are believed to be accurate. We make no warranties (expressed or implied) as to its accuracy and assumes no liability in connection with non suitable use of this product. We reserve the right to modify the contents of this form without prior notice.

PLAKA – THERMO BREAK TYPE 100

Thermal break material

REF 07.08.01 - Version V01 – 21/12/2020



Properties

The materials combine properties of high loading resistance with excellent thermal insulation. The composite materials are weatherproof. Even in an aggressive environment this material will have an excellent durability. Generally, thermo break plates are used in locations that do not require fire protection.

Properties	
Characteristic compressive strength, f_{ck}	89 N/mm ²
Design value for compressive strength, f_{cd}	70 N/mm ²
Elastic Modulus	2586 N/mm ²
Density	1137 kg/m ³
Water absorption	0.48%
Thermal conductivity, λ	0.292 W/mK
Colour	Black (may vary)



Steel Construction Institute (SCI) – Assessed Product



Quality Assurance – ISO 9001:2008

Dimensions

Material dimensions	
Thickness	10, 20 & 25 mm*
Max. length	250 cm
Max. width	120 cm

*Multiple plates can be provided for applications where thicknesses greater than 25mm are required.