

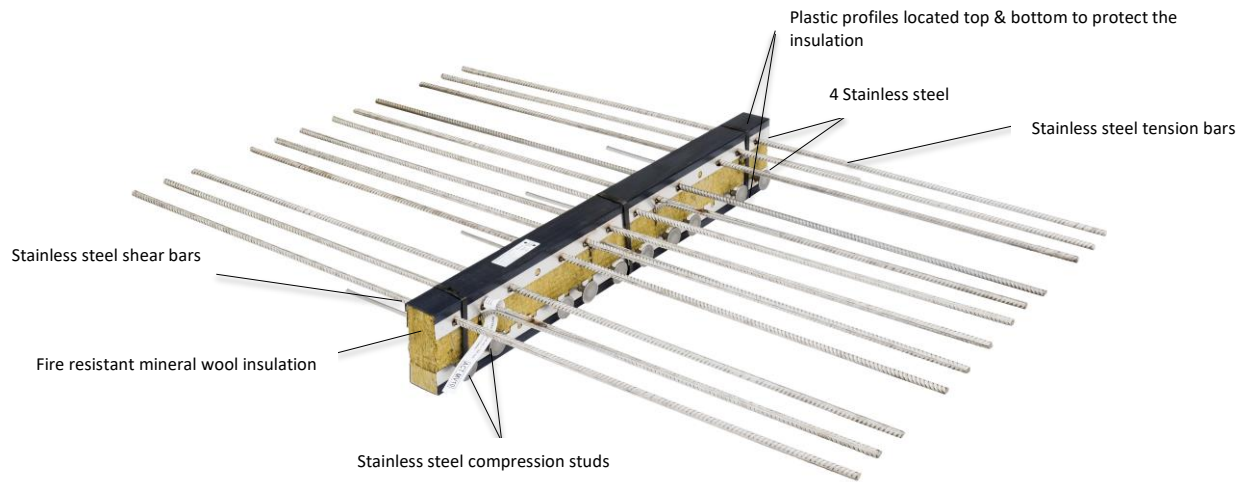
## Installation instructions

Pg. 1 / 2

### PLAKA – Isotec

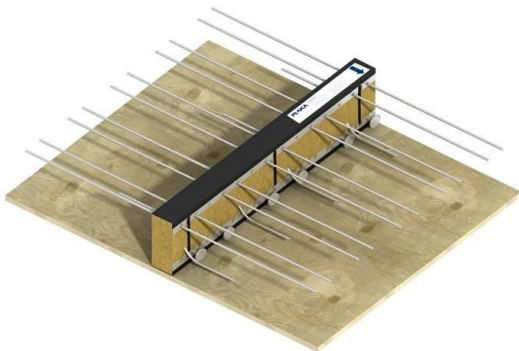
UK: Concrete to concrete Balcony Connector

REF 01.03.01 – Version V01 – 07/05/2021



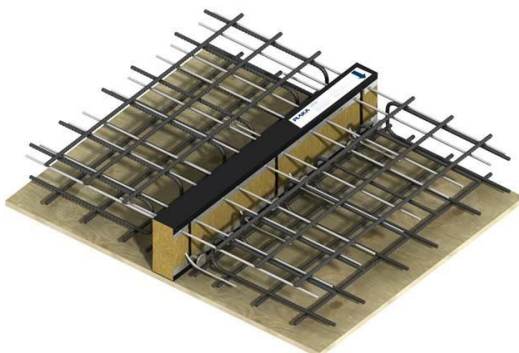
Plaka Isotec balcony connectors are manufactured as a non-deformable cage offering high rigidity and dimensional stability. Prior to installation, ensure all Isotec elements have not been damaged during transit or site handling and that they correspond to the project specification.

### Step 1 – Installation of the Isotec element



Place the Isotec system on the formwork in line with the project drawings, ensuring all Isotec elements are positioned and orientated as indicated on the product label.

### Step 2a – Position reinforcement



Position all necessary local/additional and main reinforcement. Secure each Isotec unit to the slab reinforcement. Any gaps between Isotec elements must be filled with equivalent insulating material.

©Copyright protected

This sheet, written with great care, supersedes all previous versions. The technical information on the design, models, illustrations, design values and specifications are believed to be accurate. We make no warranties (expressed or implied) as to its accuracy and assumes no liability in connection with non-suitable use of this product. We reserve the right to modify the contents of this form without prior notice.

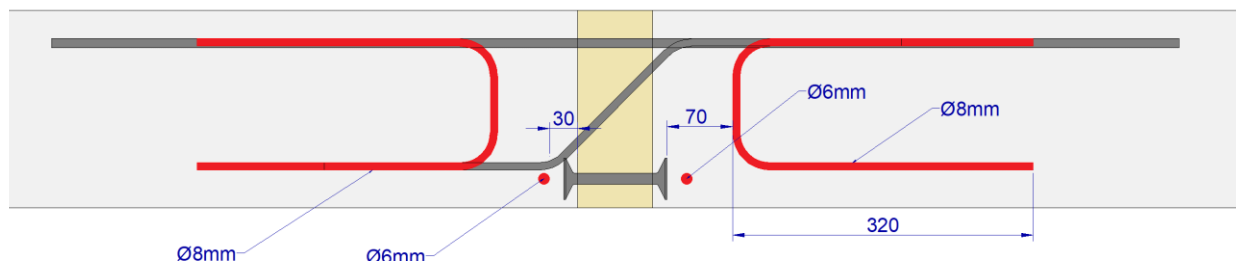
**PLAKA – Isotec**

**UK: Concrete to concrete Balcony Connector**

REF 01.03.01 – Version V01 – 07/05/2021



**Step 2b – Position necessary additional reinforcement**



Position a longitudinal reinforcement bar diameter 6 mm in front of the compression dowels over the whole length of the balcony, at both sides of the insulation board.

Position also a stirrup diameter 8mm, with a length of 320 mm in front of each compression dowel, at both sides of the insulation.

**Step 3 – Pouring of the concrete**



Concrete should be poured adjacent to the Isotec system and simultaneously to either side to avoid any displacement of the balcony connector.

**Precast Applications**

If Isotec elements are used in precast balconies, lifting systems must be positioned within the gaps between Isotec elements. Ensure the compression studs do not apply pressure on an internal structure already in position.

The necessary precautions will be taken so that the Isotec elements won't be damaged during handling of the precast balconies.

Contact us immediately if you have any questions regarding the installation.

[Click here to get more information about Isotec](#)