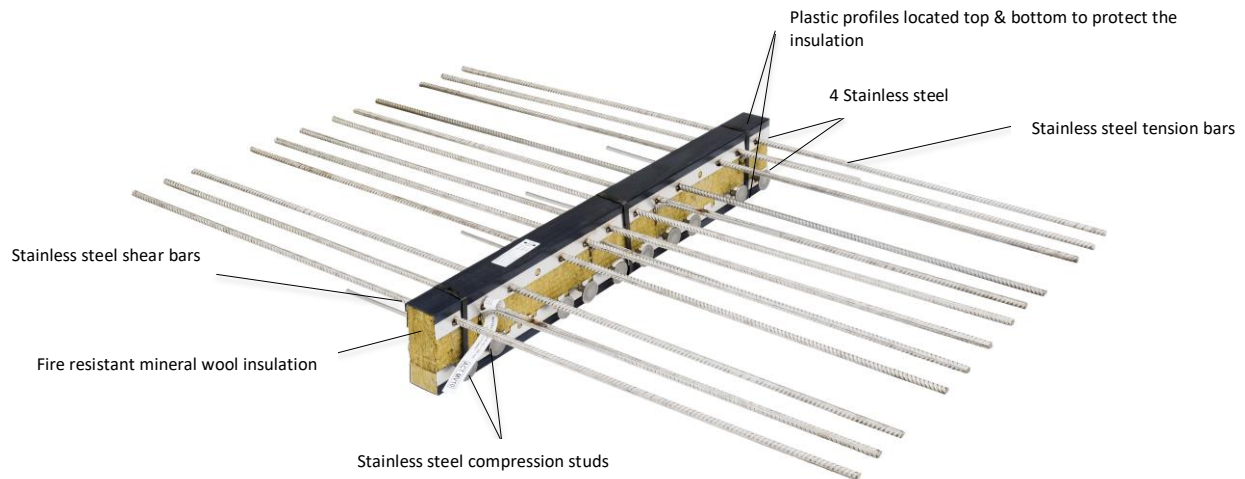


Installation instructions

PLAKA ISOTEC

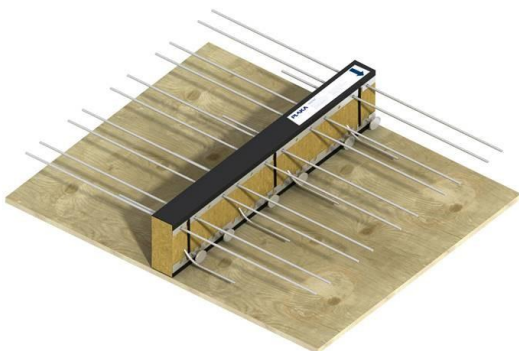
UK: Concrete to concrete Balcony Connector

REF 01.03.01 – Version V01 – 23/05/2021



Plaka Isotec balcony connectors are manufactured as a non-deformable frame offering high rigidity and dimensional stability. Prior to installation, ensure all Isotec elements have not been damaged during transit or site handling and that they correspond to the project specification.

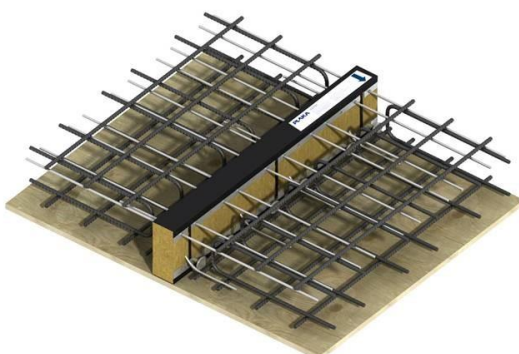
Step 1 – Installation of the Isotec element



Place the Isotec system on the formwork in line with the project drawings, ensuring all Isotec elements are positioned and orientated as indicated on the product label.



Step 2a – Position reinforcement



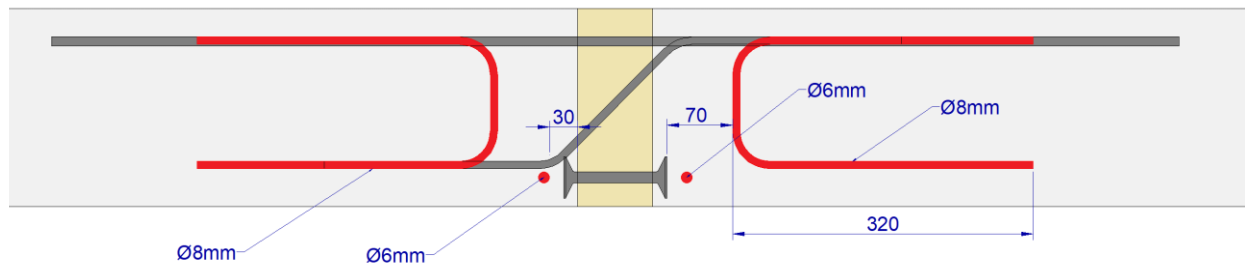
Position all necessary local/additional and main reinforcement. Secure each Isotec unit to the slab reinforcement. Any gaps between Isotec elements must be filled with equivalent insulating material.

© Protected by copyright. The construction applications and details provided in this publication are indicative only. In every case, project working details should be entrusted to appropriately qualified and experienced persons. Whilst every care has been exercised in the preparation of this publication to ensure that any advice, recommendations or information is accurate, no liability or responsibility of any kind is accepted by Leviat for inaccuracies or printing errors. Technical and design changes are reserved. With a policy of continuous product development, Leviat reserves the right to modify product design and specification at any time.

PLAKA ISOTEC

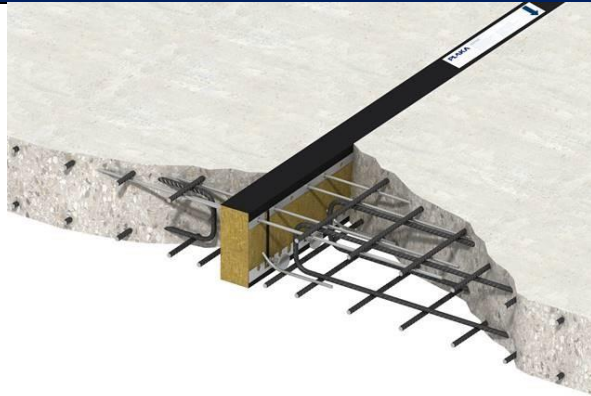
UK: Concrete to concrete Balcony Connector

REF 01.03.01 – Version V01 – 23/05/2021

**Step 2b – Positioning of additional reinforcement**

Position a 6mm dia. longitudinal reinforcing bar in front of the compression studs over the whole length of the thermal break, either side of the insulation board.

Position also a 320mm long 8mm dia. U-bar in front of each compression stud, either side of the insulation board.

Step 3 – Pouring of the concrete

Concrete should be poured adjacent to the Isotec system and simultaneously to either side to avoid any displacement of the balcony connector.

Precast applications

If Isotec elements are used in precast balconies, lifting systems must be positioned within the gaps between Isotec elements. Ensure the compression studs do not apply pressure on an internal structure already in position.

Necessary precautions must be taken to ensure that the Isotec elements are not damaged during handling of the precast balconies.

Please contact us immediately should you have any questions regarding the installation.

[Click here to get more information about Isotec](#)